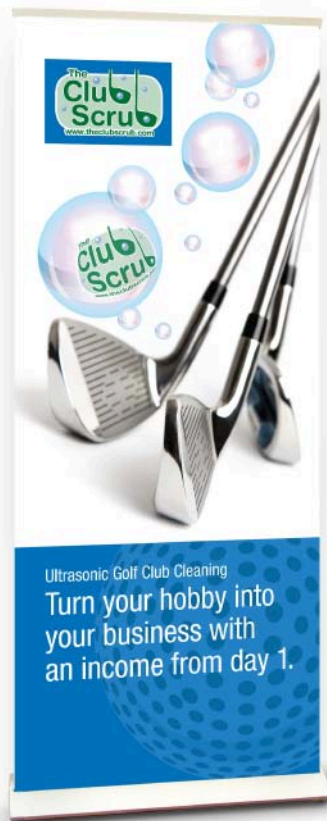




Chameleon Creatives

original
& effective
graphic design
solutions



With over 24 years experience we never underestimate the importance of listening. Quite simply, effective, durable graphic design can only be achieved when your objectives are fully understood.

Great emphasis and expertise is placed on attention to detail by combining traditional skills with technical advances. We convey any graphic element we design through to print, large format, internet use or any medium.

Whether it's an identity for an existing company or start up, brand development, marketing or advertising campaign we believe in a holistic approach to create the correct tailored solution.... that works!

Why not ask us to quote on your future requirements. There are no hidden extras and costs are always pre-advised.

Keep ahead of your competitors and contact us today.

sleedagh murrintown countywexford ireland
t/f + 353 (0)53 9139054
e design@chameleoncreatives.com

Corporate & brand identity Promotional & advertising campaigns
Annual reports, brochures, leaflets Books Web design
Signage and large format Packaging Print management

the difference is in the detail

Genesis Business College

portfolio



Chameleon Creatives

Corporate identity
for the college and
online services



Website
homepage design

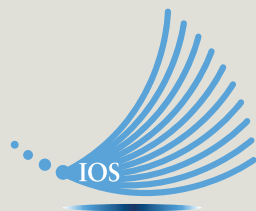


Leaflets



Genesis **Online**
BUSINESS COLLEGE

Online LMS landing page design



INSTITUTE OF
ONLINE
SERVICES

Corporate Identity
with Divisional logos



Online LMS landing page
design concepts

Corporate Identity and Logo design



Corporate Identity and Logo design



Richmond IT Services Ltd

itadvisor



MotorNOW.ie



SellNOW.ie

evolution
HOME OF INTERIORS



DALY & ASSOCIATES

CROSBIE & ASSOCIATES
Property Consultants

MAURICE CLOAKE
PHOTOGRAPHY

FINEGANS Bar

Seán Óg's Hotel



SECRET
HAIR SALON

RIVERBANK
RIVERBANK HOUSE HOTEL



AUTOMATED PACKING SOLUTIONS

Pick it! Place it! Pack it!

Handling your product from production line to pallet

Product Collator,
Tray/Case/Carton Erector,
Robotic Pick and Place and
Case Closing line.

INTRODUCTION

Products arrive from the production line and are collated into a presentable format by the Tekpak Collator. Simultaneously, the cartons or cases are erected and moved by conveyor then presented alongside the collated products. Products are picked in groups by a 2-axis robotic arm and placed into the open case, carton or tray which is moved along to a case/carton sealer ready for the pallet.

The system is driven by precision programmable servo motors under the control of a programmable logic controller which is linked by Ethernet to a graphical user interface used to "teach" the unit and for operator selection of product size etc.

SUMMARY

- For use on packaging lines of high volume Food and Pharmaceutical products.
- Ideal for handling pots, tubs, flow packs, pouches, thermoformed trays, bags, stand up pouches, tubes, cartons etc.
- Easy size change, low maintenance, user friendly touch screen.

Fully integratable with your existing production line

TECHNICAL

- Stainless steel construction ideal for Food and Pharmaceutical applications.
- Programmable logic with remote diagnostics using Allen Bradley PLC (optional Siemens or Etc.).
- Touch screen controls with "Touch" operator size change and "teach-in teach" function.
- Large gripper payloads of up to 30kg.
- Speeds up to 65 cycles per min & throughput of up to 600 individual products per min.



Advance Cleaners

Design from concept to print including copywriting of A5 6 printed page brochure



Trust Advance Cleaners to assist you

- We have over 30 years experience in the restoration and cleaning industry.
- Ideally suited to advise you on the steps necessary to recovery.
- Our experience dealing with both Insurance Loss Adjusters and registered Loss Assessors can ease your burden as the property owner at a most stressful time.
- Our internationally trained operatives travel nationally, swiftly dealing with your emergency and minimising the effect from damage and loss.
- From itemised quotation to an agreed satisfactory and result, we fully understand and empathise with our customers situation and needs.

Through training, specialised equipment & chemicals and our years of experience we can save the structures and items which are precious to you.



For a no obligation quotation please contact:

Advance Cleaners (UK) Ltd
Unit 3, Pinewood Business park
Whitwell Road, Wexford, Ireland
Tel: 053 9145500
Fax: 053 9145500
info@advancecleaners.ie
www.advancecleaners.ie
EMERGENCY CONTACT: 087 2500086



The Advance team
are here to help



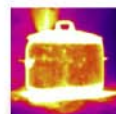
Initial steps to take

Need to contact your insurance company?
Here are some things you should know:

- Give your insurance company as much detail as possible.
- Your insurance company will allocate a loss adjuster who will contact you and arrange to survey the damage.
- Pre-determined emergency repairs can be carried out immediately to minimise the claim, it is essential you photograph items/areas prior to proceeding.
- It is recommended that any repairs be handled by a reputable contractor.
- Do not throw anything away. If items need to be moved, take photos of them in their original position and keep them on site until the adjuster has carried out their survey.

- Following your meeting with the adjuster, you will be better informed as to your next steps to take and the quotations you require along with receipts or quotes for damaged contents.
- You are entitled to employ, at your own expense, a registered Public Loss Assessor to work on your behalf. Payment from the insurance company is normally paid to the insured directly less a percentage of retention which is held until final invoices are received by the adjuster.

...a quick response helps



Fire Damage

Smoke is created as a result of incomplete combustion. It is acidic in nature and can affect some items irreversibly within 72 hours. Together with the devastating visual impact, the most noticeable effect will be the odour.

Depending on the fire content this can be Protein Odours, Natural Substance Odours, Synthetic Odours or a mix of all three.

The timely washing/neutralisation of sensitive surfaces can save items from permanent damage. A combination of expertise, experience, range of equipment, chemicals and odour removal techniques can help damage both your structures and possessions quickly returning your life to normal.



Flood Damage

There are two types of flooding categorised as clean water and dirty water. An example of a clean water flood would be a burst water pipe within the building. A dirty water flood occurs when the water has been contaminated by dirt and bacteria as it travels.

It is therefore advisable to assume all flooding contains harmful bacteria. Suitable protection should always be taken when handling any items prior to them being sanitised.

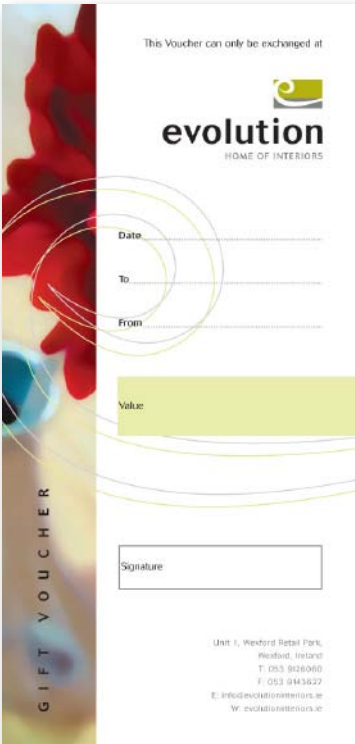
Depending on time and temperature factors, mould spores can grow very quickly without swiftly planned water/moisture removal, sanitising and drying procedures. These produce best results when performed by professional, trained operatives.





evolution

HOME OF INTERIORS



Corporate Identity, advertising and promotional material



Chameleon Creatives

BEHIND the Rising Star of the South East

"Did you know that each tablecloth is ironed by hand before every wedding"

Dates to Remember 2012

Wedding Evening
4 March

5th Annual Wedding Festival
26 August

Exhibitors: Book NOW for Early Bird Special

Contact: moira@brandonhousehotel.ie
or greg@brandonhousehotel.ie

Tel: 051 421703
www.brandonhousehotel.ie

BRANDON HOUSE HOTEL
& SOLAS CROÍ Eco SPA
New Ross, County Wexford

4 star Hotel Advertising Campaign
for up-coming wedding festival event

DAWN MEATS GROUP GRADUATE RECRUITMENT PROGRAMME

are you a CUT above the rest ?

Established in 1980 the Dawn Group is one of the top beef and lamb processors in Europe.

As part of our strategy for growth our Graduate Recruitment Programme develops the future Managers of the Dawn Group.

The programme is crafted to ensure you have support in the early stages of your career with us, balanced with the opportunity to exhibit your initiative and potential.

Our on-going requirement for ambitious and talented individuals who **are a cut above the rest** maintains our position as a major player in the future of red meat in Europe.

Find out more about us on our website and email your Curriculum Vitae to us today.

DAWN GROUP
FROM GATE TO PLATE

DAWN MEATS GROUP

Web: www.dawnmeats.com Email: hr@dawnmeats.com Tel: +353 (0)51 309200

International Company Student Recruitment Campaign
Concept created and images sourced by Chameleon









Chameleon Creatives

IMPORTANT INSTRUCTIONS

ALWAYS

- Use gloves
- Use a clean, dry container for Klorsept solution
- Take care to measure out Klorsept carefully
- Make a fresh solution
- Wash away dirt before disinfecting
- Throw away solution at end of day or after use
- Ensure that tablets are completely dissolved before closing a container lid

AVOID

- Use with animal fibres such as silk or wool
- Prolonged immersion of stainless steel items
- Mixing with acids and strong reducing agents

REFER TO GUIDANCE LAMUETINDE TUB

KLORSEPT

DISINFECTANT
TABLETS


1 in 5

200 TABLETS
Each tablet contains:
1670 mg. Sodium Dichloroisocyanurate

Rapid activity against a wide spectrum of micro-organisms, including bacteria, viruses, protozoa, spores and fungi




FOR THE DISINFECTION OF:

General, Non-Sensitive Areas	200 ppm
Sensitive Areas	1000 ppm
AIDS & HBV	5000 ppm
Body Fluid Spillages	10,000 ppm



Manufactured by
Meredol Ltd
Redditch, Warwick
Tel + 252 25 916040
www.meredol.com

231 097 PCS No. 93738

Caution
Organisms to be Destroyed
Not for Use

KLORSEPT KLORSEPT KLORSEPT

**IMPORTANT INSTRUCTIONS
WHEN USING KLORSEPT**

ADVERT:

- Use gloves
- Use a clean, dry container for the Klorsept solution
- Take care to measure out Klorsept correctly
- Make a fresh solution
- Wipe away dirt before disinfecting
- Throw away solution at end of day or after use
- Ensure that tablets are completely dissolved before doing a container lid

AVOID

- Use with animal skins or silk or wool
- Prolonged immersion of stainless steel items
- Mixing with acids and strong oxidising agents.

REFER TO GUIDANCE (Klorsept IRL 8)

KLORSEPT®

DISINFECTANT TABLETS

Rapid activity against a wide spectrum of micro-organisms, including bacteria, viruses, mycobacteria, spores and fungi

KLORSEPT KLORSEPT KLORSEPT

2.20.097
PCS No. 93738

FOR THE DISINFECTION OF:

General, Non-Sensitive Areas	200 ppm
Sensitive Areas	1000 ppm
AIDS & HBV	5000 ppm
Body Fluid Spillages	10,000 ppm

Outfiring

Intox

Delivered to
the Environment

Manufactured by
Mackintosh Ltd., Wexford, Ireland
Tel: +353 51 900882
www.mackintosh.co.uk

END PRODUCT

Each tablet contains

1670 mg Sodium Dichloroisocyanurate

Sterinova®
30 STERILISING TABLETS

Sterinova®
30 TABLETS

Sterinova®
Child Care
STERILISING TABLETS

The modern convenient and effective method
for safely sterilising baby's feeding equipment

30 TABLETS

Sterinova®
Child Care
STERILISING TABLETS

30

STERILISING TABLETS

BAR CODE

30 STERILISING TABLETS

Sterinova®
Child Care
STERILISING TABLETS

30

STERILISING TABLETS

DIRECTIONS FOR USE: IMPORTANT - A fresh solution must be made daily.

- To prepare the correct sterilising solution add one Sterinova® tablet to 4 pints (2.5 litres) of lukewarm water.
- To give a 10ppm available chlorine in solution in a suitable non-metallic container.
- Immediately after each feed clean the bottle, cap, teat and other utensils inside and out in warm water containing a little washing-up liquid. Use a bottle brush to remove all milk deposits and then rinse. Rub the teat inside and out with salt. Rinse well in warm water.
- Completely immerse all feeding utensils in the prepared solution making sure there are no trapped air bubbles. Soak for 10 minutes. If the solution has become cloudy, change it.
- Wash hands thoroughly before handling the sterilised utensils or preparing baby's food. Drain the bottles, caps, teats and other items. Although not essential, these items may be rinsed with cooled, freshly boiled water.

Note: Keep out of reach of children! Do not swallow tablets. Avoid contact with the eyes. Take care not to splash liquids as the solution may bleach. Do not place metal objects in the solution. Store in a cool, dry place.

Each tablet contains: Sodium Dichloroacetate. Manufactured in Ireland by Medway Ltd, Wexford, Ireland.

St Peters College - Literature

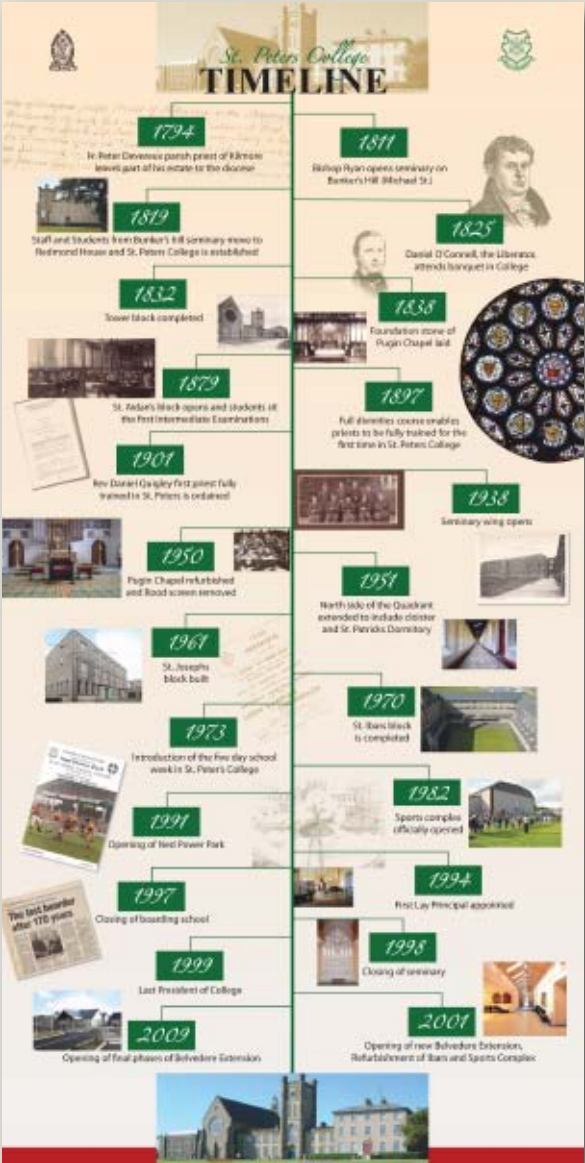
2012 Spectrum Magazine - 80pp

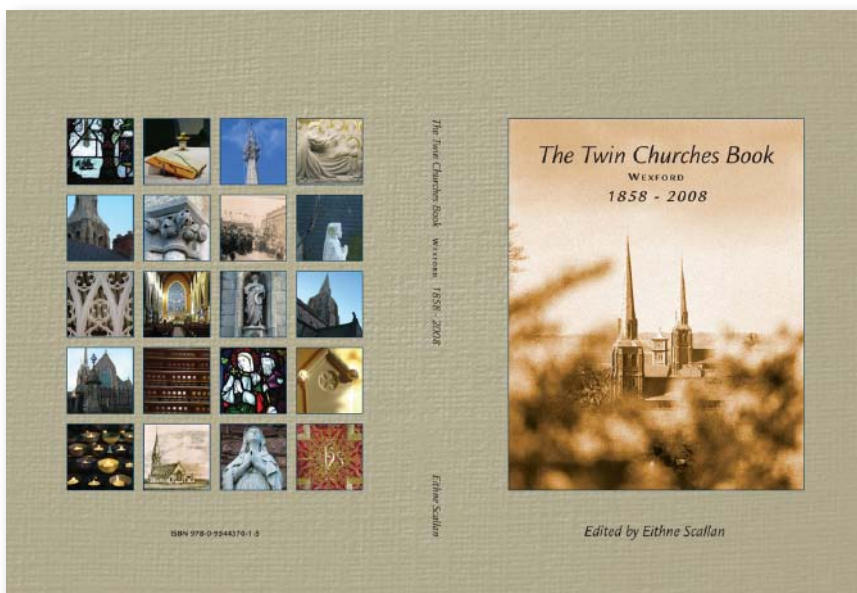


2012 Final Year Student Yearbook - 128pp



Main 4ft x 8ft Panel for the Bicentenary Celebration and history panels - please see next pages for a selection of the other panels.





The Twin Churches Book:
108 printed page hardback

Majority of images sourced or
photographed by Chameleon



TREASURE IN THE GALLERY - Introducing the Church Organs

Editor

In 1985 musicologist and critic Charles Aron wrote for *The Irish Times*: "The twin churches dominate Wexford's skyline... it is too well known that they contain two organs, unique large examples of William Walton's middle period work."

Wexford is indeed blessed with not alone Twin Churches, but also with two church organs. These unique and beautiful instruments were built specially at the Telford organ works in Stoke Newington, Dublin, for the opening of the churches in 1938. They contain almost two thousand pipes and more than a thousand moving parts.

Besides the beauty of the music from the organs, participation in the congregation, as well as visitors, need only look upwards to be impressed by the decorations on the pipes themselves. In the course of research prior to preparing of the pipes, an interesting comment on Wexford's past came from the files of "Wexforders in America through correspondence with organist Carl Linder. It was Mr. Wexford's generation who built the original design and provided the pipes in 1938, travelling to Wexford from Limerick by Bandon meadows. The pipes on both organs were central to drive tall glory with help from local craftsmen the 'Twin Kirk' and the late John Doherty.

Contributors have come from distinguished organs such as Central Church, in the course of

showing the restoration of the Boleston organ in 1982, described it as 'remarkably fine and of considerable artistic and historic importance'. Colman German organ is described as 'a fine organ' and was described as a 'Wexford model' on the organ as part of Wexford Festival in 1988. A further festival organ was the Gerard Kilm in 1983 and then Bower in 1995. Following the 1988 restoration of Boleston, an organ has been of German church organs arrived on a site for the privilege of playing on local organ. Church organs must have been glad to read during the recent restoration at the end of the Second World War, the words "In the Latin church the pipe organ is to be held in high esteem for it is the traditional musical instrument, and one that adds a wonderful splendour to the Church's ceremonies and powerfully lifts up man's mind to God and to heavenly things."

Tragically, in the Wexford area too, young local musicians have emerged as organists including Carl Linder, Carl Murphy (both locally trained by Carl Linder) and Eamonn McKenna, who trained first with William Murphy, married by another local organist Ruth Miller. In addition, Ben Craven, then founder of the Adoration, played the organ, as did his sister. Organist Carl Linder has contributed a scholarly historical article.



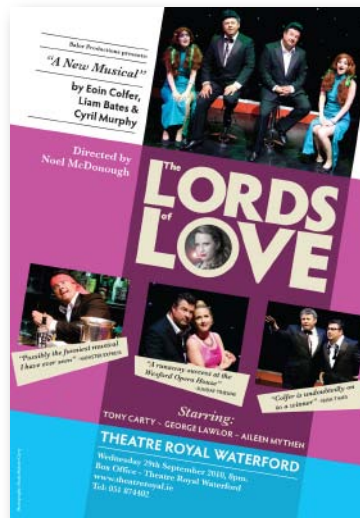
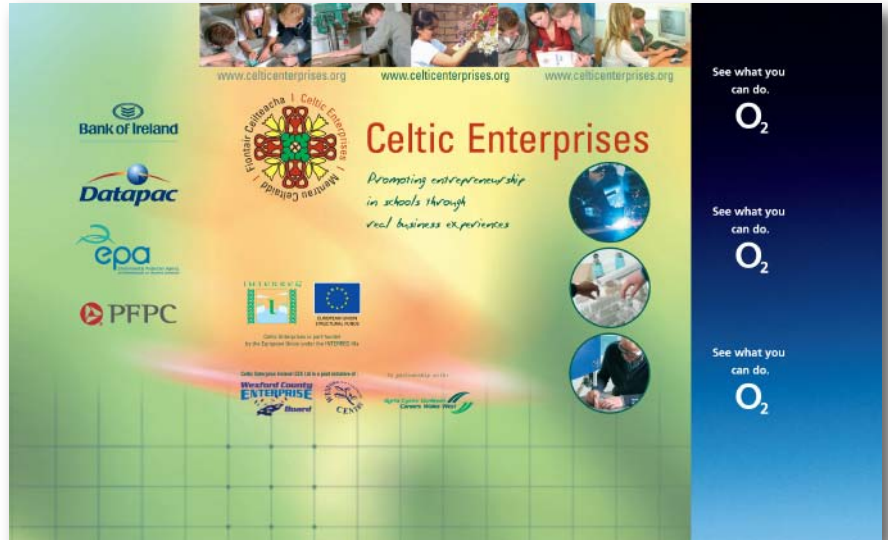
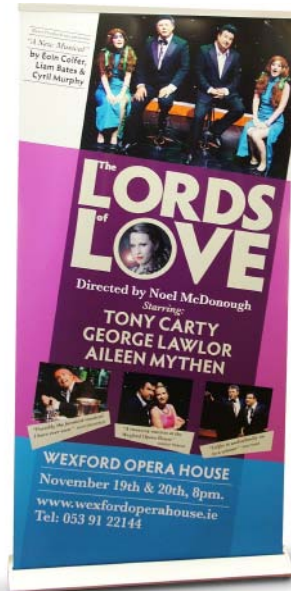


Wexford Festival Opera Fringe Guides
13 brochures in total, 1 each year since 2000

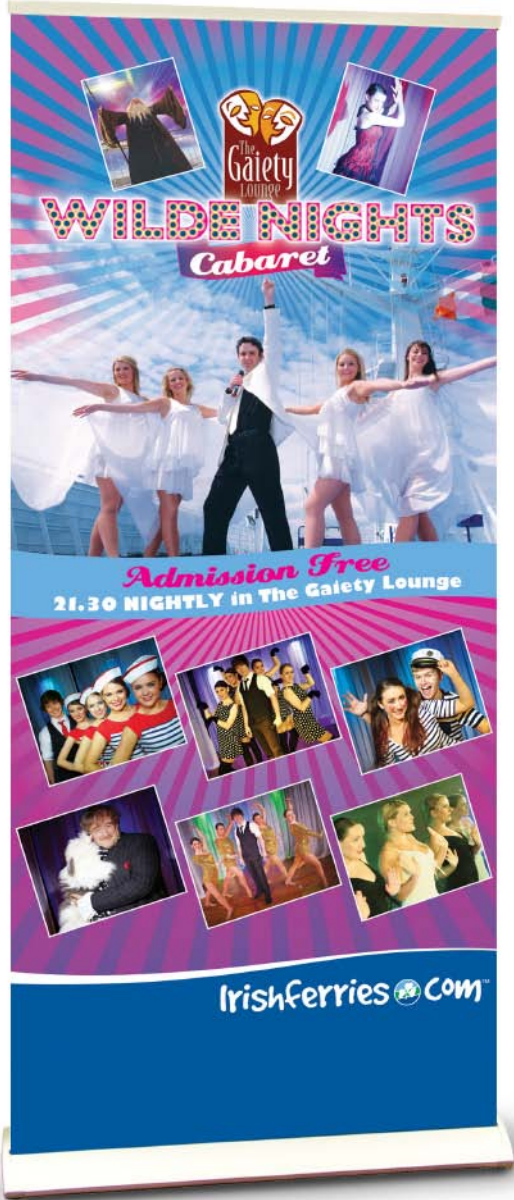


Talbot Hotel Group
3 high end sales brochures

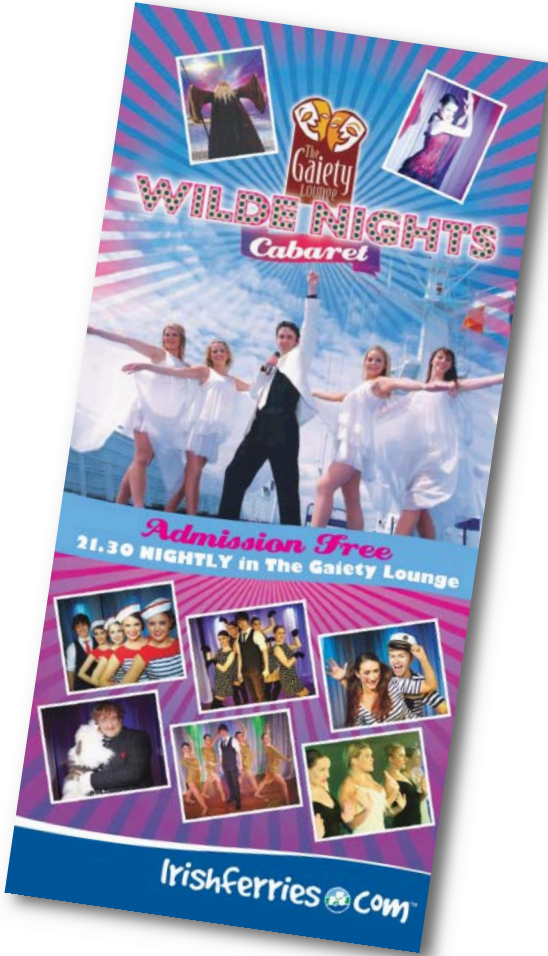
3 County Councils Historic Town Trail signage.
All images sourced or photographed and
maps created by Chameleon



Lords of Love
production signage



Pull up stand and flyer





Dawn Meats Group

All recruitment and general advertising, group rebranding, stationery and promotional literature for this multi-national company based in Ireland.

Dial M for Music/
Balor Productions/Irish Ferries

Corporate ID established 12 years ago and still in use.
Worked on production & show literature and signage in conjunction with renowned international author Eoin Colfer and also Irish Ferries.

Brandon House Hotel

Wide selection of design and advertising material and campaigns since 2007 to the present.

Eithne Scallan

Worked in conjunction with author on 'The Celtic Story' - A history of Celtic Linen, 'The Boat Club' - story of Wexford Harbour Boat and Tennis Club and 'The Twin Churches Book 2008' hard cased books.

Mary Dillon, Artist

ID for artist and the gallery, all printed brochures, invites, advertisements and promotional literature.

The Solutions Group

Formally Farm Solutions - ID including logos for 6 departments, stationery, annual report and promotional literature.

Wexford Chamber of Commerce

Designed and collaborate on the Wexford Opera Festival fringe guide since 2000 plus ongoing work including Wexford Business Awards 2010.

Other Valued Clients:

ABS Pumps, Acorn Fashions, Advance Cleaners, Alan Keville, Bui Bolg, Ballycoursey Lodge Health Spa, Bolands Garage Wexford, Celtic Linen, Childcare Network Loch Garman, Datapac, Delaney Concrete, Evolution, Failte Ireland, GA Group, Genesis Business College, Greentree Developments, Irish Rail, Institute of Online Services, Medentech, Metro Building Contractors, Mary Reynolds - Landscape Gardener, Nicholas Mernagh Architects, Maldron Hotel Group, Oltech Systems, Remax - S.E and Wicklow, Regan Organic, Riverbank House Hotel, Richmond It, St Peters College, Sarah Keville - Essence Nail and Beauty, Tekpak Automation, Senator Windows, Webtools Software, Westgate Design, Wexford Creamery, Wexford County Council and Borough Councils, Wrights of Howth, Wexford TV, Whites of Wexford, Westgate Design, X-Seed.

Previous UK Based Clients Include: The Big Breakfast, BBC Haymarket Exhibitions, Cobham PLC, Friends Provident, Sainsburys, Toshiba, Rover Group, Kraft General Foods, Matterson Walls, Lesme Chocolate, Lever International Group.